



## **CASA F 15-20**

House roof ventilators for  
extract air ventilation



**Swegon** 

# CASA F roof ventilators for houses

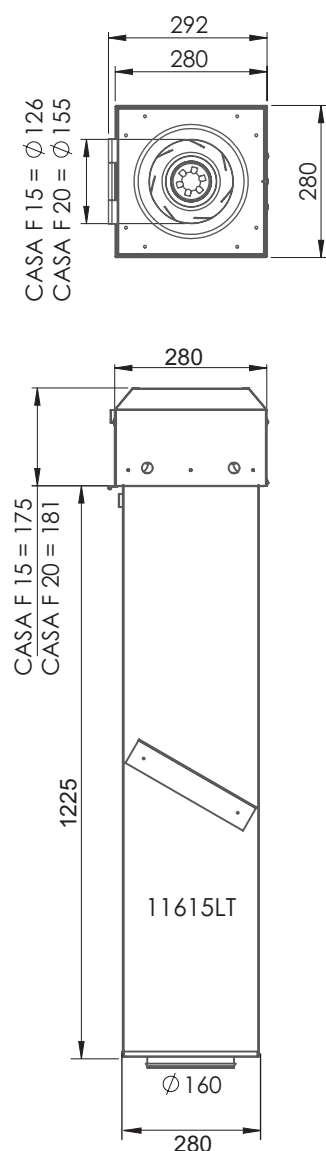
The CASA F roof ventilator combines good technical properties, reliability and a high-quality finish. The starting point for the design has been high efficiency and overall economy, as well as simple installation and service.

The CASA F roof ventilators are suitable for both new builds and renovation projects. In detached and terrace houses, the CASA F roof ventilator can be used for spot ventilation in the kitchen or bathroom. In older properties being renovated, the home's entire mechanical extract air ventilation can be achieved with the CASA F roof ventilator. In high-rise buildings, the CASA F roof ventilators are well suited for ventilating lift shafts and storage areas, for example.

The CASA F roof ventilators are made of electro-galvanised sheet metal, although models painted black are also available.

## Dimensions

### CASA F 15 & CASA F 20



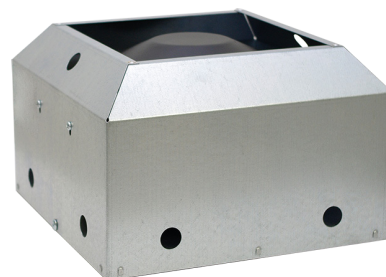
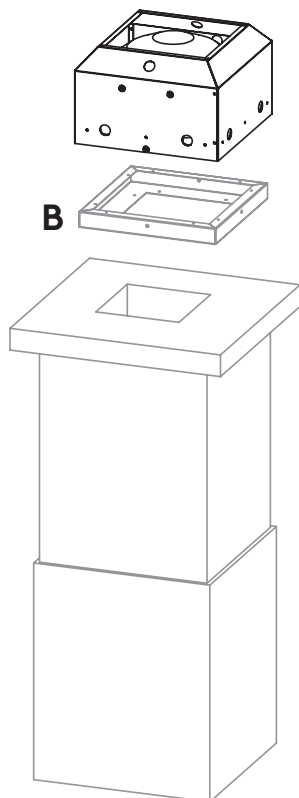
# Installation

An acoustically and fire-insulated (EI30) roof penetration collar **A** (11715K CASA F 15 & 20) and the flat mounting frame **B** (11615LT CASA F 15 & 20) are available for installation as accessories.

## Direct installation



## Alternative installation.



# Product codes and accessories

## Roof ventilators

Part no.	Designation
11615EC	CASA F 15-EC, galvanised
11615	CASA F 15-AC, galvanised
1162EC	CASA F 20-EC, galvanised
1162	CASA F 20-AC, galvanised

## Accessories

Part no.	Designation
1171P66	Safety switch
IEC	EC-regulator
ITFC	Transformer unit for AC control
116ECSPEED	EC speed adjustment potentiometer

## Roof installation accessory

Part no.	Designation
11615LT	Roof penetration collar for F15 and F20 roof ventilators (installation method A)
11715K	Mounting frame for F15 and F20 roof ventilators (installation method B)
117AP15	Airstream-operated damper for F15 and F20 roof ventilators

Feel good **inside**

